

WIRING TRUNKINGS AND CHANNELS



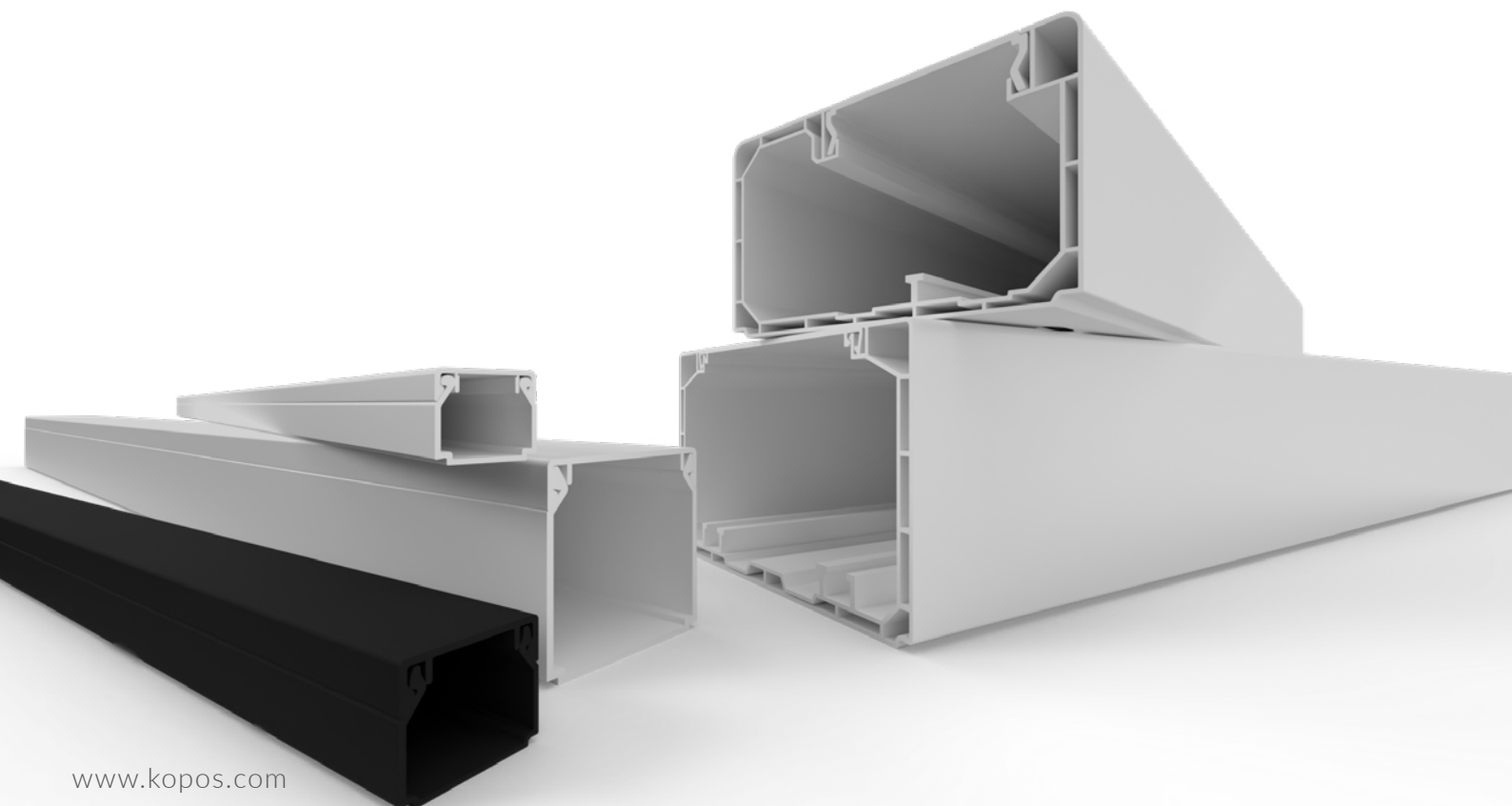
KOPOS



WIRING TRUNKINGS AND CHANNELS

Wiring trunkings and channels are made of PVC or PC/ABS in accordance with ČSN EN 50058-1. It's designed for indoor use. They are designed for small and low voltage distribution. As a standard, they are produced in white color corresponding to RAL 9003.

Double-locked trunkings have increased rigidity and the lid is firmly attached. As a standard, they are protected by foil against damage and pollution during transport and assembly. They are approved for Explosive Environments 2 and 22. The trunkings marked with the letters „HF“ are made of halogen-free material and are therefore suitable for areas with regard to the safety of persons and property in case of fire.





DO NOT GIVE BACTERIA A CHANCE

ANTIBACTERIAL PVC AND PC/ABS TRUNKINGS



*Full range
of white trunkings
and the accessories*



RESISTANT TO:

ESCHERICHIA COLI | STAPHYLOCOCCUS AUREUS | KLEBSIEL/A PNEUMONIAE
PSEUDOMONAS AERUGINOSA | ENTEROCOCCUS FAECALIS | BACILLUS SUBTILIS
SALMONELLA ENTERICA | LEGIONELLA PNEUMOPHILA | CANDIDA ALBICANS

www.kopos.com



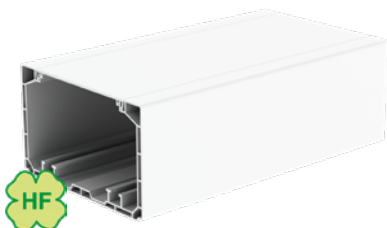
PARAPET CHANNELS FOR CLASSIC DEVICES



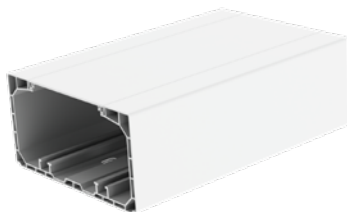
- smart minimalistic design
- intended for classic devices by inserting into the snap-on device box KP 80 PK
- easy assembly of the cover by pushing on the centre part
- the possibility of separating the curcuits with a shielding channel or a partition
- large covers for convenient covering of joints - a perpendicular cut is enough without need to adjust the angles



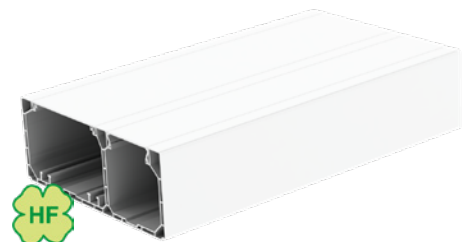
PK 110X65 D (HF)	8211 (HF)	8212 (HF)	8213 (HF)	8214 (HF)	8215 (HF)	8216 (HF)	8217 (HF)
PK 130X65 D	8221	8222	8223	8224	8225	8226	8227
PK 170X65 D (HF)	8231 (HF)	8232 (HF)	8232 (HF)	8232 (HF)	8232 (HF)	8232 (HF)	8232 (HF)



PK 110X65 D



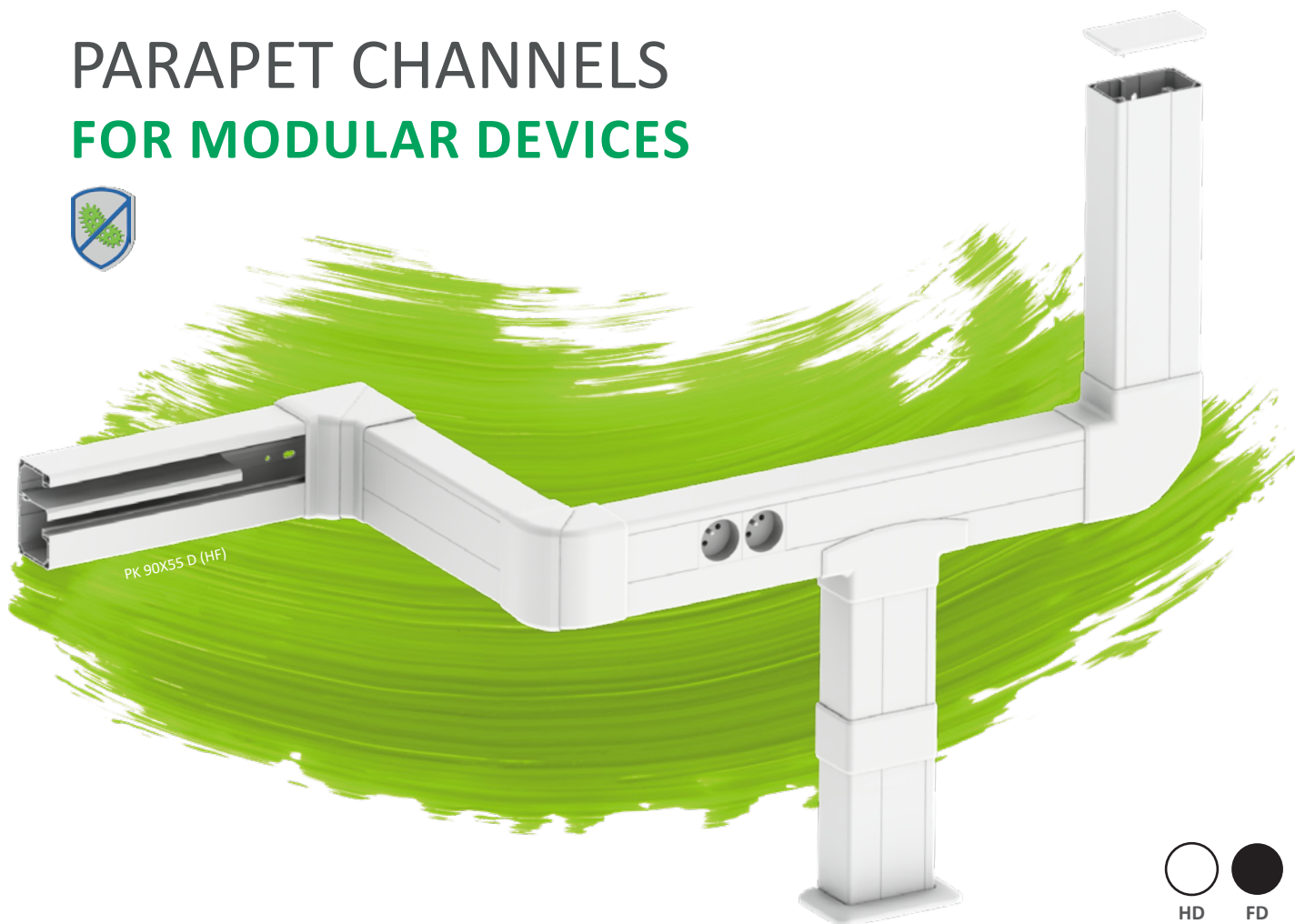
PK 130X65 D



PK 170X65 D



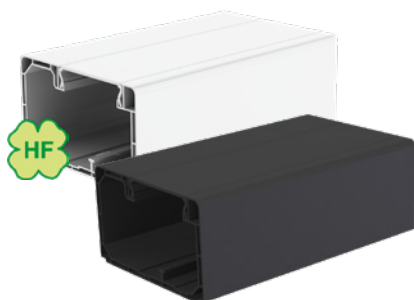
PARAPET CHANNELS FOR MODULAR DEVICES



- smart minimalistic design
- intended for power modular devices 45x45 mm or data modular devices 45x22,5 mm
- direct snapping of the KOPOS modular device instead of cover
- large covers for convenient covering of joints - a perpendicular cut is enough without need to adjust the angles
- newly PK 90X55 D also in black color



	8401 (HF)	8402 (HF)	8403 (HF)	8404 (HF)	8405 (HF)	8406 (HF)	8407 (HF)
PK 90X55 D (HF)	8471	8472	8473	8474	8475	8476	8477
PK 120X55 D	8481	8482	8483	8484	8486	8486	8487
PK 160X65 D	8491	8492	8493	8494	8497	8496	8497
PK 210X70 D							



PK 90X55 D



PK 120X55 D



PK 160X65 D



PK 210X70 D



WIRING CHANNELS ELEGANT

EKE



- possibility of using classic devices by inserting them into the device box (EKE 60X60 only for distributions)
- instrument pads cover the perpendicular cut around the device
- possibility of installing a 3f socket in the PN EKE device carrier
- possibility of separating the circuits with a shielding channel or a partition
- spacers included in the sales package, can also be purchased separately



EKE 60X60	8541	8542	8543	8544	8545	8546	REKE 60
EKE 100X60	8551	8552	8553	8554	8555	8556	REKE 100
EKE 140X60	8561	8562	8563	8564	8565	8566	REKE 140
EKE 180X60	8571	8572	8573	8574	8575	8576	REKE 180



EKE 60X60



EKE 100X60



EKE 140X60

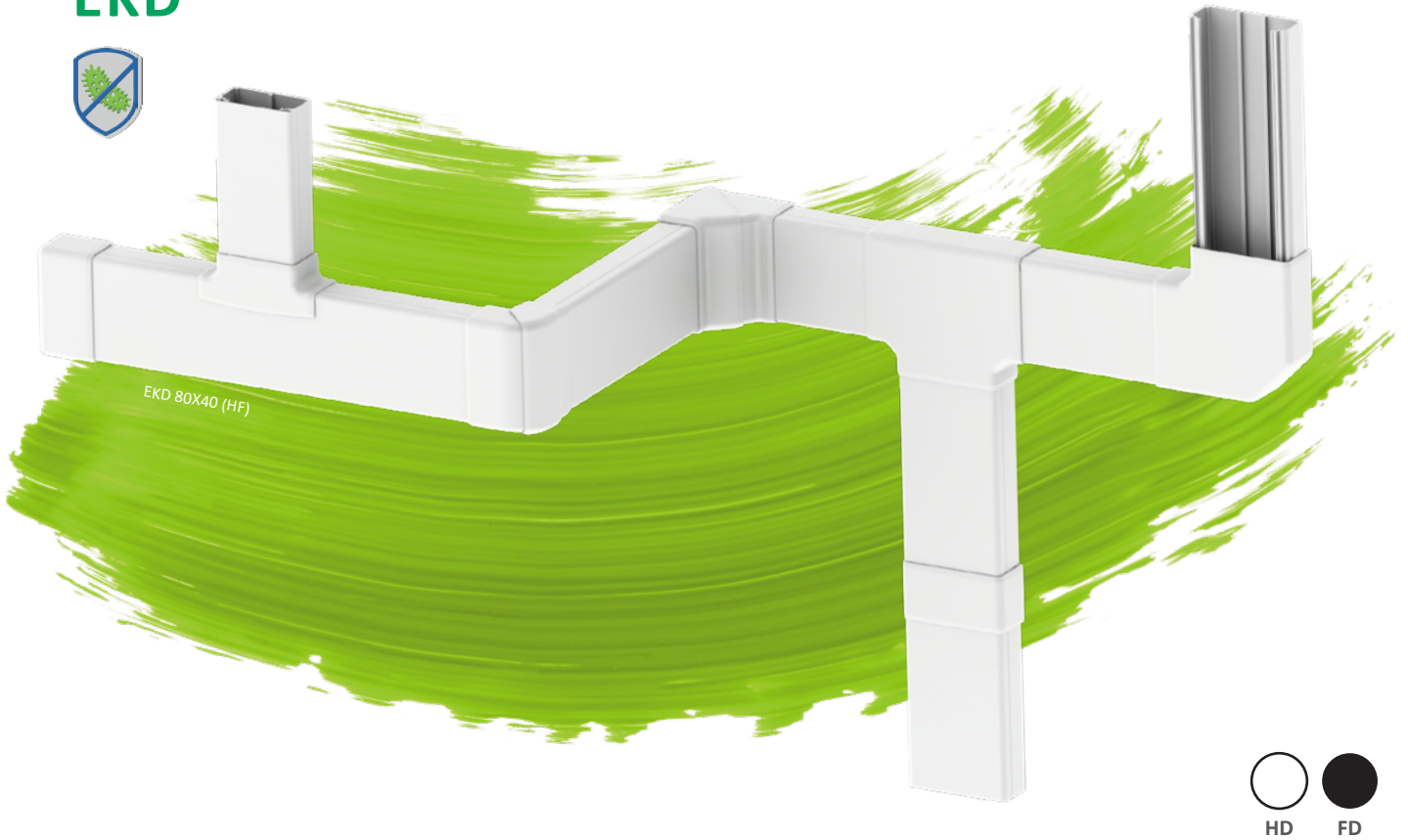


EKE 180X60



WIRING CHANNELS

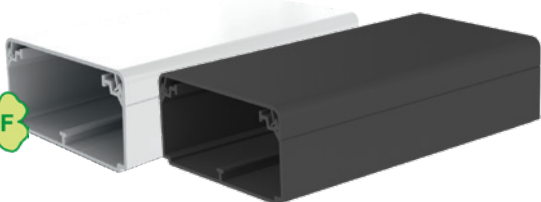
EKD



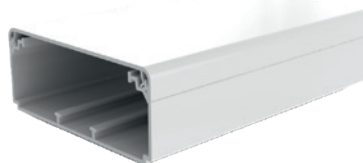
- intended only for wiring distributions
- spacers included in the sales package, can also be purchased separately
- possibility of circuit separation with a partition PEKD 40 (HF)
- transition covers for connection to other EKD with different widths (85...4/EKD)
- newly EKD 80X40 also in black color



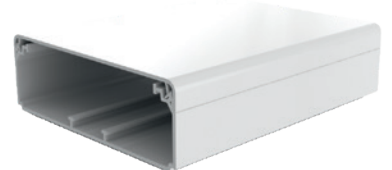
EKD 80X40 (HF)	8501 (HF)	8502 (HF)	8503 (HF)	8504 (HF)	8505 (HF)	8506 (HF)	REKO 80X40 (HF)
EKD 100X40	8511	8512	8513	8514	8515	8516	REKO 100X40
EKD 120X40	8581	8582	8583	8584	8585	8586	REKO 120X40



EKD 80X40



EKD 100X40







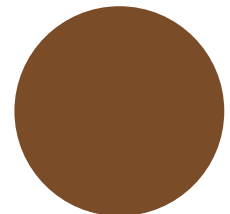
EKD 120X40



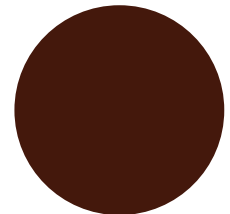
WIRING TRUNKINGS COLOR VARIATIONS

- color variants for easier matching with the surrounding interior
- a wide range of covers and trunking boxes in corresponding colors

				
	SD	TD	I1	I2
LV 18X13	X	X		
LHD 20X20	X	X	X	X
LHD 40X20	X	X	X	X
LHD 40X40	X	X		
LP 35	X	X	X	X



SD



TD



I1



I2



BLACK ELEGANCE

FOR A MODERN INTERIOR



- trunkings in PVC and HF variants
- newly PVC channel for modular sockets
- black HF trunkings with higher temperature resistance, suitable also for exterior use

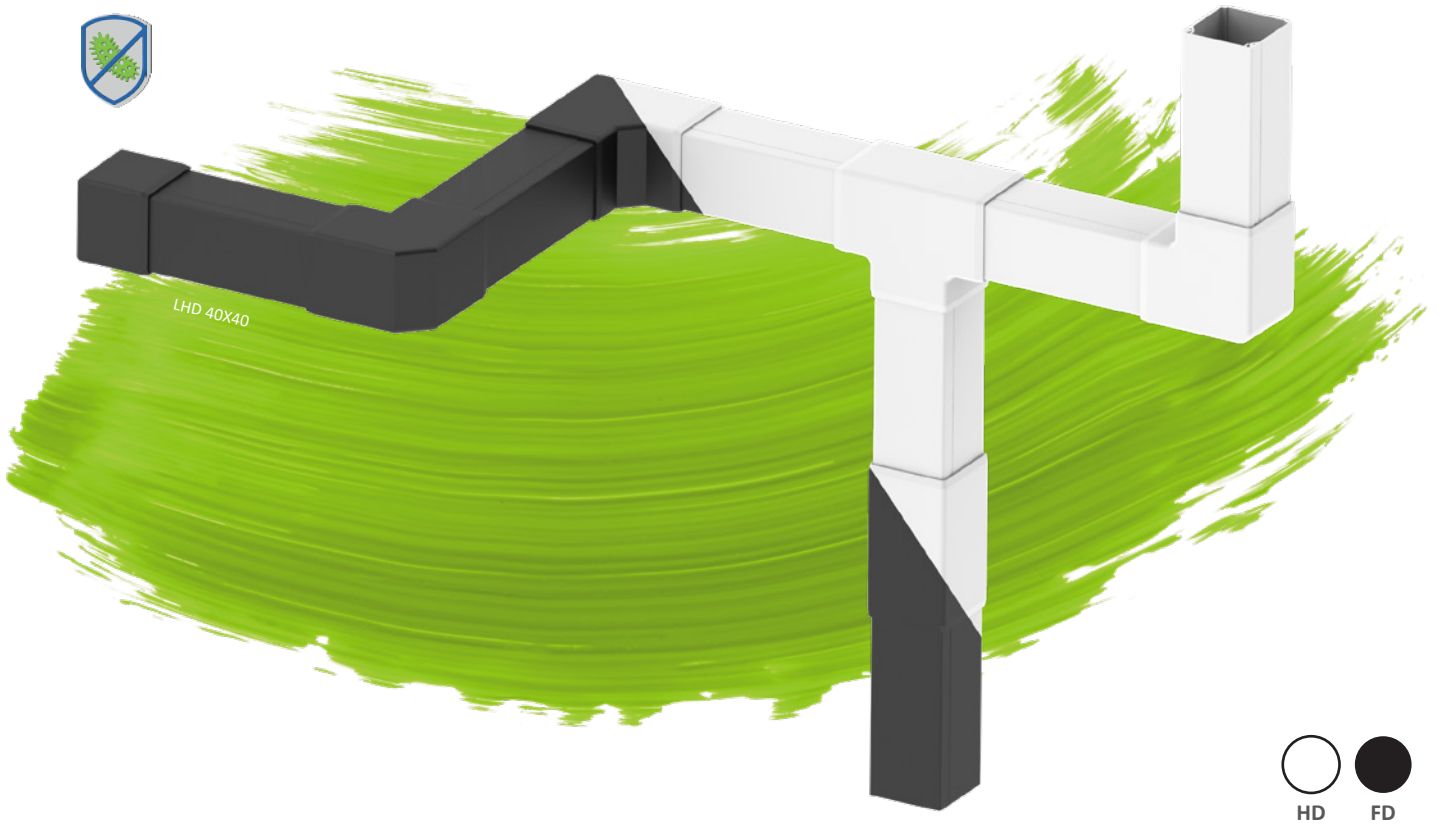
RANGE OF GOODS

LHD 20X10 | LHD 20X20 | LHD 40X20 | LHD 40X40 | LH 60X40
EKD 80X40 | PK 90X55



WIRING TRUNKINGS

PVC



- black and white version
- suitable for interior use
- selected most used dimensions
- a wide range of accessories - covers and trunking boxes



LHD 20X10	8921	8922	8923	8924	8925	8926	-
LHD 20X20	8621	8622	8623	8624	8625	8626	8629
LHD 40X20	8631	8632	8633	8634	8635	8636	8639
LHD 40X40	8641	8642	8643	8644	8645	8646	-
LH 60X40	8651	8652	8653	8654	8655	8656	-



LHD 20X10



LHD 20X20



LHD 40X20



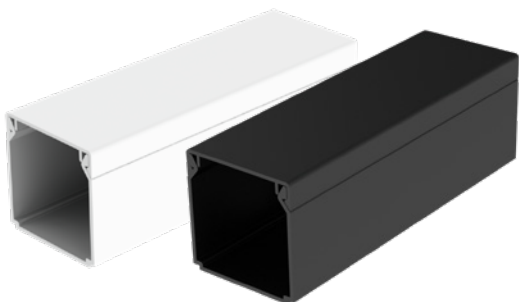
WIRING TRUNKINGS HALOGEN-FREE



- black and white version
- more durable material with a temperature range of -25 to +90°C, possible to use also outdoors
- halogen-free design for indoor environments with a higher concentration of people
- a wide range of accessories - covers and trunking boxes



LHD 20X10 HF	8921 HF	8922 HF	8923 HF	8924 HF	8925 HF	8926 HF	-
LHD 20X20 HF	8621 HF	8622 HF	8623 HF	8624 HF	8625 HF	8626 HF	8629 HF
LHD 40X20 HF	8631 HF	8632 HF	8633 HF	8634 HF	8635 HF	8636 HF	8639 HF
LHD 40X40 HF	8641 HF	8642 HF	8643 HF	8644 HF	8645 HF	8646 HF	-
LH 60X40 HF	8651 HF	8652 HF	8653 HF	8654 HF	8655 HF	8656 HF	-



LHD 40X40



LH 60X40



WIRING TRUNKINGS INSERTING AND SQUARE



- timeless simple design
- double lock increasing the rigidity of the trunking and fixing the cover as a standard
- easy assembly and using, protective foil for clean installation
- wide range of covers and accessories
- selected dimensions in color variants

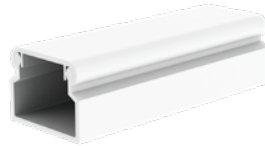


LV 11X10	-	-	-	-	-	-	-	-
LV 18X13	8731	8732	8733	8734	8735	8736	8737 8738 8739	
LV 24X22	8791	8792	8793	8794	8795	8796	8797	
LV 40X15	8711	8714	8716	8715	8713/2	8712/2	8717 8719	
LH 15X10	8681	8682	8683	8684	8685	8686	-	
LHD 17X17	8671	8672	8673	8674	8675	8676	-	
LHD 25X15	8691	8692	8693	8694	8695	8696	-	
LHD 25X20	8911	8912	8913	8914	8915	8916	-	
LHD 30X25	8931	8932	8933	8934	8935	8936	-	
LHD 32X15	8601	8602	8603	8604	8605	8606	-	
LHD 50X20	8991	8992	8993	8994	8995	8996	-	
LHD 50X20/1	8991	8992	8993	8994	8995	8996	-	
LHD 50X20/2	8991	8992	8993	8994	8995	8996	-	

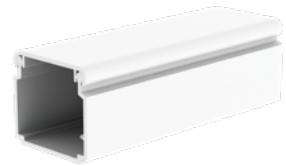
WIRING TRUNKINGS AND CHANNELS



LV 11X10



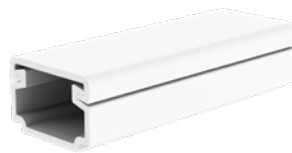
LV 18X13



LV 24X22



LV 40X15



LH 15X10



LHD 17X17



LHD 25X15



LHD 25X20



LHD 30X25



LHD 32X15



LHD 50X20



WIRING TRUNKINGS ELEGANT



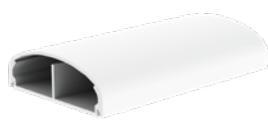
- elegant round cover
- we offer PNE device carrier for the installation of electrical equipment directly to the trunking
- not intended for the floor



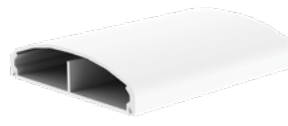
LE 40	8751	8752	8753	8754	8755	8756	8757
LE 60	8761	8762	8763	8764	8765	8766	-
LE 80	8771	8772	8773	8774	8775	8776	-



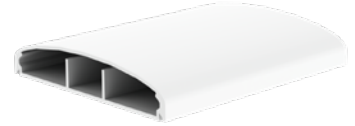
LE 40



LE 60



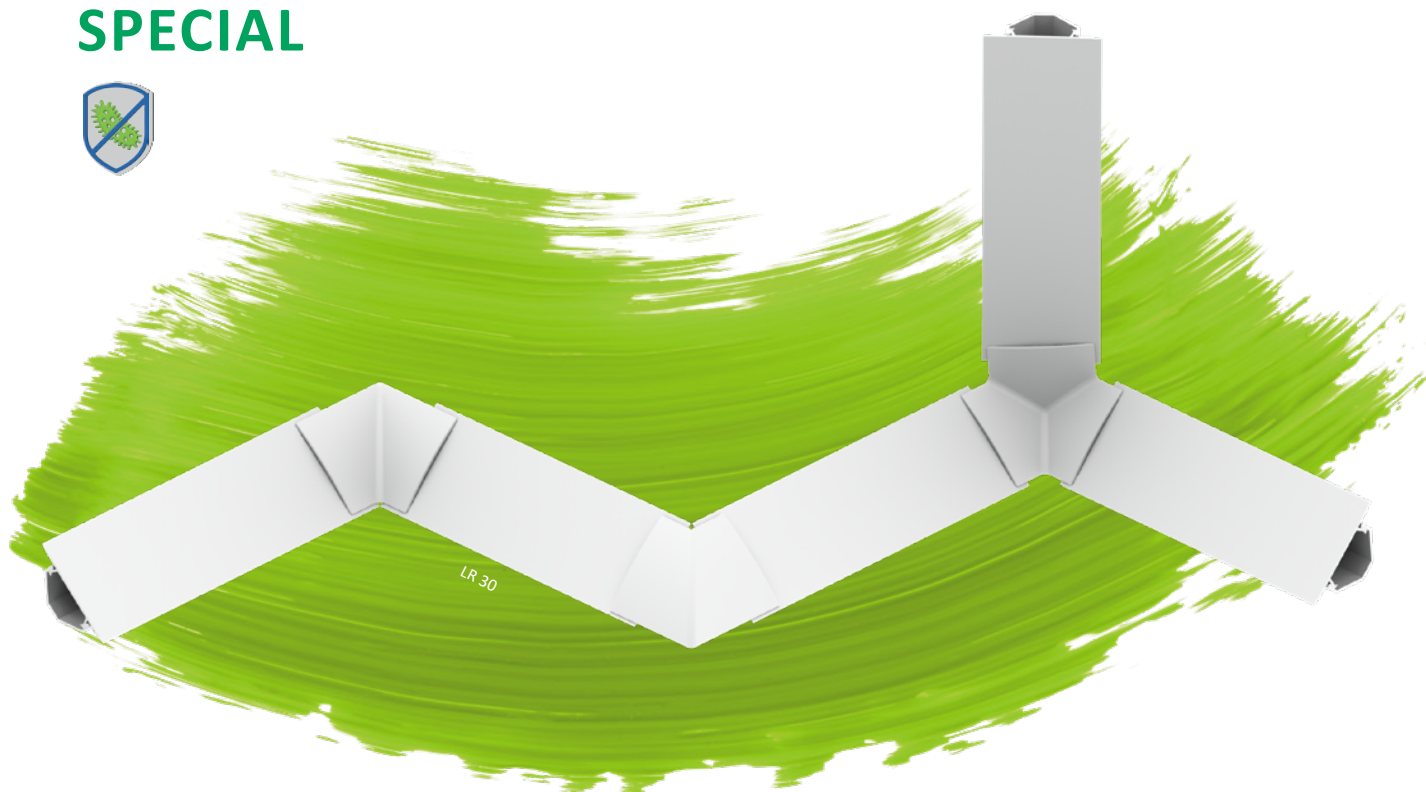
LE 80



LE 100



WIRING TRUNKINGS SPECIAL







LR 30

- intended for installation in corners
- length 2.6 m as a standard room height

LZ(K) 15X12

- hinged cover connected to the trunking with a hinge on one side
- we offer bushing covers for LK boxes and branch cover from LP 80X255

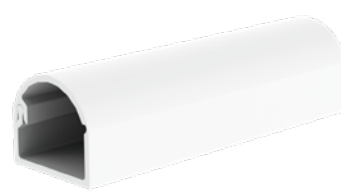
				
LR 30	8855 8855/3	8856	-	-
LZ 15X12	-	-	8819	8824/41
LZK 15X12	-	-	8809	8824/40



LR 30



LZ 15X12

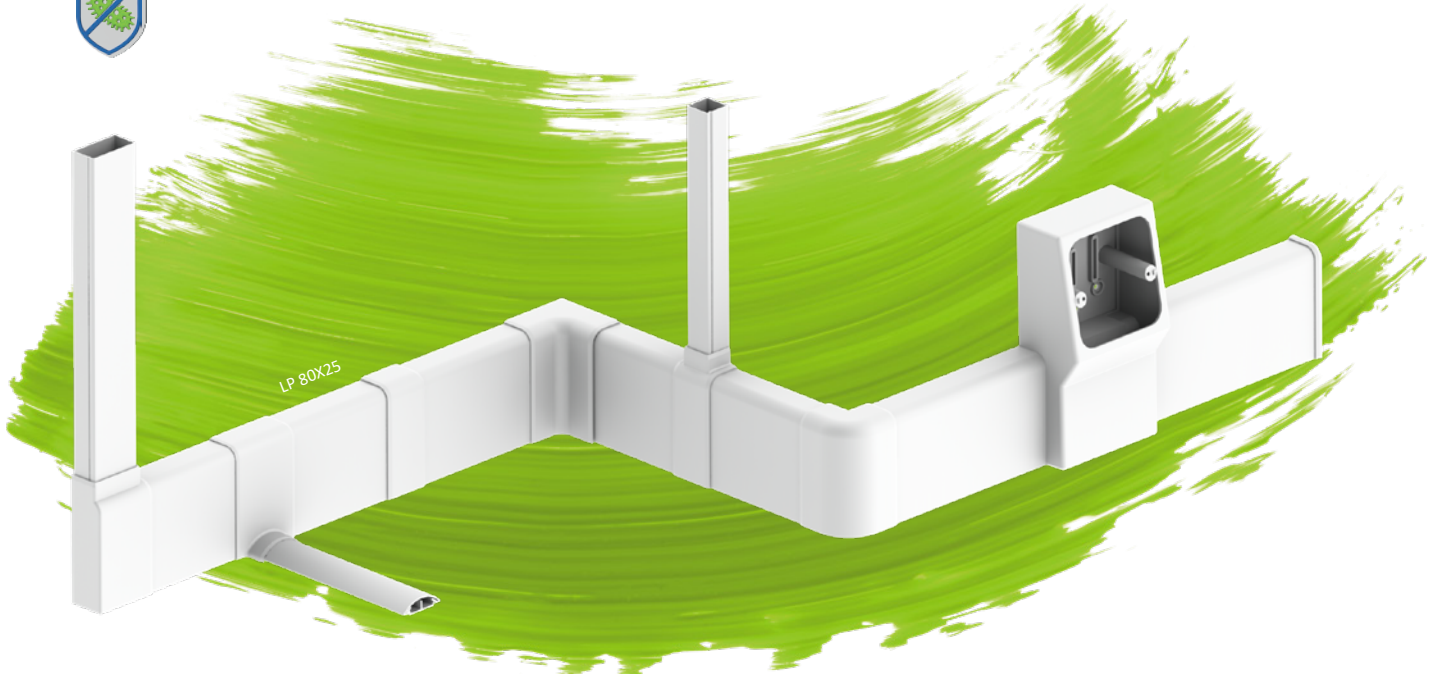


LZK 15X12



WIRING TRUNKINGS

PLINTH



LP(K) 80x25

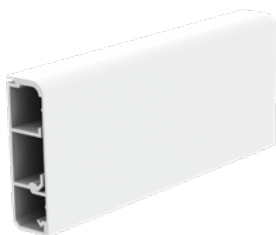
- a wide range of transition covers for turning onto a smaller trunking
- LPK with a slot for sliding the carpet to alignment with the floor
- separate chambers for better visibility of hidden wiring

LP 35

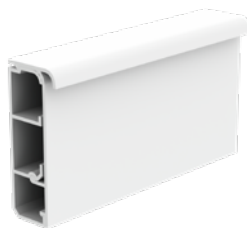
- with softened injection for adhesion to the wall
- device carriers for classic and modular devices directly on the trunking
- in five color variants for better alignment with the floor



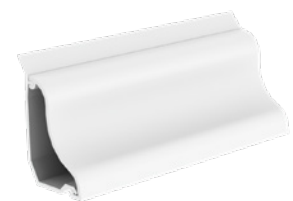
LP 80X25	8821 L	8821 P	8822	8825	8826
LPK 80X25	8821 L	8821 P	8822	8825	8826
LP 35	8861 L	8861 P	-	8865	8866



LP 80X25



LPK 80X25

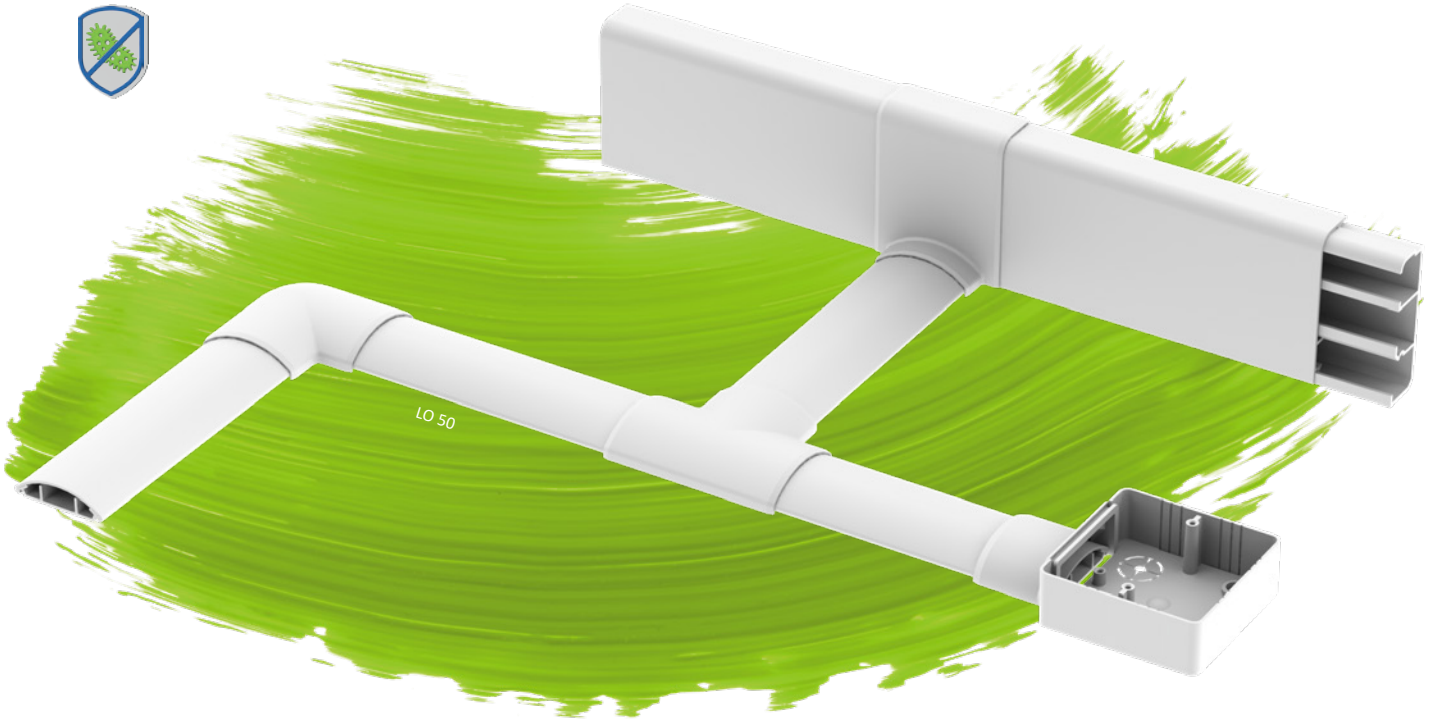


LP 35



FLOOR TRUNKINGS

LO



- trunkings intended for the floor - foot-resistant and resistant to ordinary office and residential loads
- higher mechanical resistance
- variants in white, light gray and dark gray colour
- covers for direct transition into LK trunking boxes from LO 35 and LO 50 trunkings



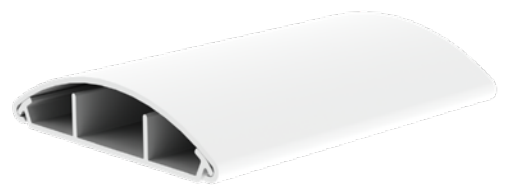
LO 35	8833	8834	8837	8824/43
LO 50	8843	8844	8847	8824/44
LO 75	8873	8874	-	-



LO 35



LO 50



LO 75



ACCESSORIES

WIRING TRUNKINGS AND PARAPET CHANNELS

SOCKET MODULES
DEVICES 45X45



SOCKET MODULES
HDMI



SOCKET MODULES
COVER



SOCKET MODULES
USB



SOCKET MODULES
DATA SLOT





WIRING TRUNKINGS AND CHANNELS

NUMBER OF INSERTED CABLES

approximate cable diameter (mm)	6	7	8	8,5	9	9,5	10	11	12	13	14	15	16
trunking type													
LV 11X10	-	-	-	-	-	-	-	-	-	-	-	-	-
LV 18X13	2	1	1	-	-	-	-	-	-	-	-	-	-
LV 24X22	3	2	2	1	1	1	1	-	-	-	-	-	-
LV 40X15	6	5	4	3	2	2	2	1	1	-	-	-	-
LH 15X10	1	1	-	-	-	-	-	-	-	-	-	-	-
LHD 17X17	2	1	1	1	1	-	-	-	-	-	-	-	-
LHD 20X10 (HF)	2	1	-	-	-	-	-	-	-	-	-	-	-
LHD 20X20 (HF)	3	3	2	2	1	1	-	-	-	-	-	-	-
LHD 25X15	3	3	2	2	2	1	1	1	-	-	-	-	-
LHD 25X20	3	3	2	2	2	1	1	1	-	-	-	-	-
LHD 30X25	6	5	3	2	2	2	2	2	2	1	1	1	1
LHD 32X15	4	3	2	2	2	1	1	1	-	-	-	-	-
LHD 40X20 (HF)	6	5	3	3	2	2	2	2	1	1	1	1	-
LHD 40X40 (HF)	14	10	8	8	6	6	5	5	3	2	2	2	2
LHD 50X20	7	6	5	4	3	3	3	2	1	1	1	1	-
LHD 50X20/1	7	6	5	4	3	3	3	2	1	1	1	1	-
LHD 50X20/2	7	6	5	4	3	3	3	2	1	1	1	-	-
LH 60X40 (HF)	24	18	16	14	12	11	9	7	6	4	3	3	3
LZ 15X12	1	1	1	-	-	-	-	-	-	-	-	-	-
LZK 15X12	1	1	1	-	-	-	-	-	-	-	-	-	-
LP 80X25/ LPK 80X25	16	14	10	9	8	7	7	6	5	4	3	2	2
LP 35	5	3	3	2	1	1	1	1	1	-	-	-	-
LR 30	7	5	5	4	4	3	3	2	2	2	1	1	1
LO 35	2	-	-	-	-	-	-	-	-	-	-	-	-
LO 50	5	2	2	-	-	-	-	-	-	-	-	-	-
LO 75	11	7	6	5	4	4	3	2	2	-	-	-	-
LE 40	8	6	5	4	3	3	2	2	1	1	1	-	-
LE 60	10	8	7	5	4	3	3	2	2	2	-	-	-
LE 80	12	10	8	6	4	4	4	3	3	2	-	-	-
LE 100	14	11	10	10	8	8	6	6	3	3	-	-	-
EKD 80X40 (HF)	28	20	14	12	12	10	10	8	6	5	4	4	4
EKD 100X40	36	24	18	16	16	14	14	12	8	7	6	5	5
EKD 120X40	44	29	20	18	18	16	16	14	10	8	7	6	6
EKE 60X60	31	23	16	13	11	11	9	7	7	6	6	5	5
EKE 100X60	55	40	30	22	22	20	18	15	13	13	10	8	8
EKE 140X60	79	60	45	40	36	34	28	22	20	18	13	12	12
EKE 180X60	103	78	59	46	43	40	40	30	27	25	17	17	15
PK 110X65 D (HF)	60	45	36	30	30	25	22	19	15	13	12	9	8
PK 130X65 D	74	52	45	38	35	28	28	25	18	18	15	12	10
PK 170X65 D (HF)	93	74	60	55	48	42	37	34	30	22	20	15	12
PK 90X55 D (HF)	44	30	25	22	19	15	15	13	9	8	8	6	6
PK 120X55 D	57	41	31	30	28	24	20	18	13	12	12	10	8
PK 160X65 D	93	60	56	48	45	40	38	31	22	21	20	15	13
PK 210X70 D	95	74	60	55	48	42	37	34	30	22	20	15	12
SK 40X22	10	8	6	6	4	4	3	2	2	1	1	1	1
SK 40X33	16	10	8	8	6	6	4	4	3	2	1	1	1

The table uses 60 % of the internal cross-section of the trunkings.



KOPOS KOLÍN a.s.
Havlíčková 432
280 02 Kolín
Česká republika

tel.: +420 321 730 111
e-mail: kopos@kopos.cz
www.kopos.cz

KOPOS Slovakia s.r.o.
Prešovská 43
821 02 Bratislava
Slovenská republika

tel.: +421 255 410 711
e-mail: kopos@kopos.sk
www.kopos.sk

